



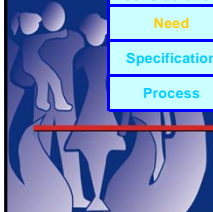




Why an Asset Management and Procurement Champion?

Identification of need is the first, and most important part, of the procurement process.

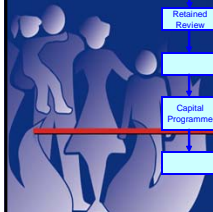
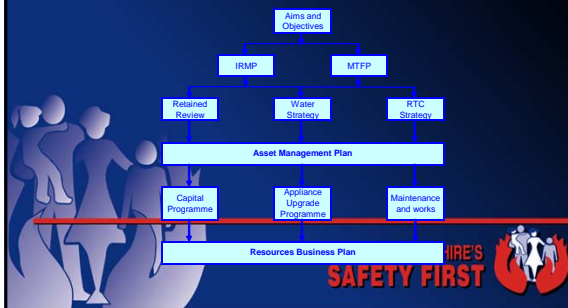
Area of consideration	Savings likely to be achieved	Policy area
Need	Major	Asset Management
Specification	Medium	
Process	Minor	Procurement



PUTTING SHROPSHIRE'S
SAFETY FIRST



How Asset Management Plans link our aims to asset provision

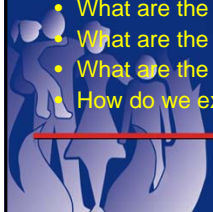


PUTTING SHROPSHIRE'S
SAFETY FIRST



Output from the Asset Management Plans

- What do we have?
- What do we need?
- How do we fill any gaps?
- What are the costs?
- What are the priorities?
- What are the timescales?
- How do we expect performance to improve?



PUTTING SHROPSHIRE'S
SAFETY FIRST



Future Developments

- Authority requested to adopt the Asset Management and Procurement Strategy
- Strategy and Resources Committee will receive Capital Programme scheme progress reports
- Fire Authority will receive an annual report detailing capital schemes carried out over the previous 3 years and their effect on service delivery



PUTTING SHROPSHIRE'S
SAFETY FIRST